

MODULES

1-Axis: Type MLB

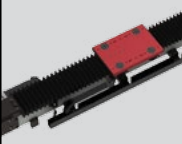
1-Axis: Type EP

2-Axis: Type ZP

3-Axis: Type FP

Cantilever: Type CP

Trackmotion: Type TMF/TMO



Zubehör und Optionen

Accessoires et options

Accessories and options

Zubehör und Optionen

Accessoires et options

Accessories and options

110

Drehachse

Die Vertikalachse der ZP-/FP- und CP-Module kann mit weiteren Drehachsen (C-, B und C/B/A bestückt werden.

Axes de rotation

L'axe vertical des modules ZP-/FP- et CP peut être équipé d'un axe de rotation supplémentaire (C-,B et C/B/A)

Rotary axes

The vertical axis of the ZP-/FP- and the CP-Modules can have additional rotary axes (C-, B and C/B/A).



andere Drehachsen, A-, B- auf Anfrage
 les autres axes, A-, B- sur demande
 other rotary axes, A, B on request

	MLB			EP							ZP							FP							CP					TMF				TMO			
	1	2	3	1	2	3	4	5	6	7	1	2	3	4	5	6	7	1	2	3	4	5	6	7	1	2	3	4	5	1	2	3	4	1	2	3	4
110																			

OPTIONS

Zubehör und Optionen

Accessoires et options

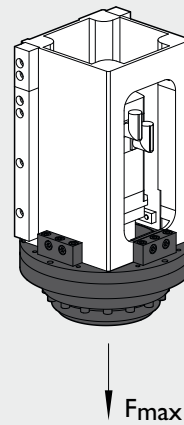
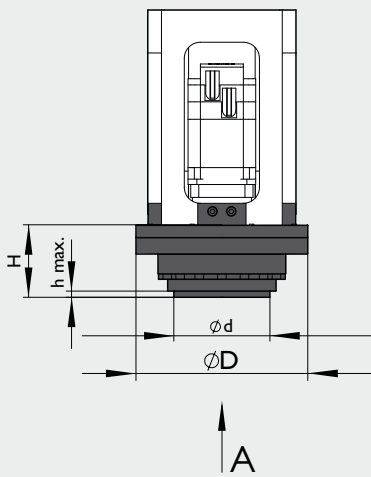
Accessories and options

110

C-Drehachse

Axes de rotation C

Rotary C axes



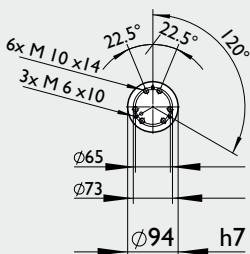
	ZP/FP/CP-3	ZP/FP/CP-4	ZP/FP/CP-5	ZP/FP-6	ZP/FP-7
F max [N]	550	1450	3600	12000/9500	29000/23900
Masse* [kg]	6	11	24	36	83
D [mm]	160	190	260	320	400
H [mm]	85	95	100	135	170

Platzbedarf ausreichend für Siemens-Motor / espace suffisant pour les besoins Siemens-Motor / sufficient space for Siemens-Motor

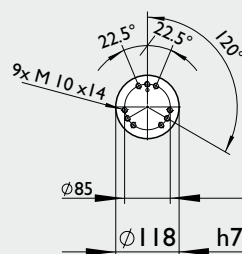
Übersetzung / Rapport / Ratio [-]	IFK7022	IFK7033	IFK7043	IFK7063	IFK7085
	164.07	164.07	161	201	192.75

*ohne Motor/ sans motor / without motor

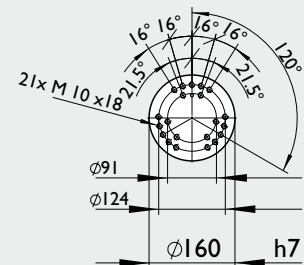
ZP/FP-3



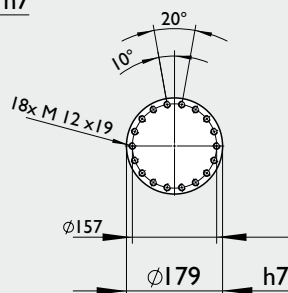
ZP/FP-4



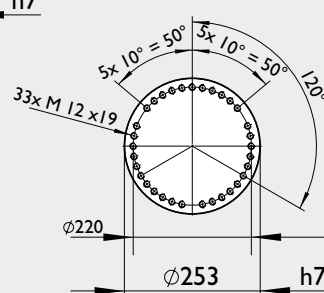
ZP/FP-5



ZP/FP-6



ZP/FP-7



A

